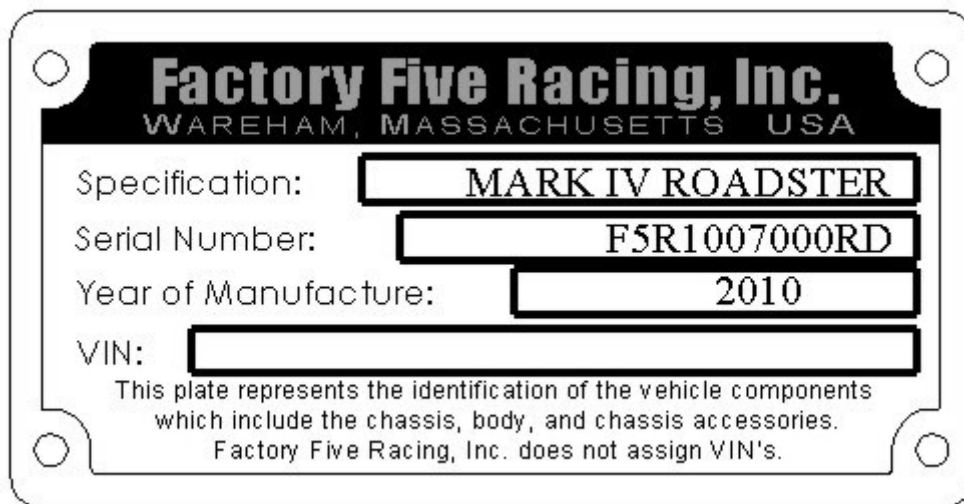




Serial Number Identification

Factory Five Racing has included a Certificate of Origin along with a Nameplate for your kit. The serial number from the Certificate of Origin matches the number engraved on the 2”x 2” tube going across the car at the front of the cockpit. Below is an example of how the nameplate looks. The VIN number space is provided so that your state issued VIN number can be engraved if you so desire. This can be engraved at any Trophy or mall engraver.



Tools and Supplies List

The following lists detail the tools and supplies that are needed to build your kit. The “helpful” items are not crucial to the assembly but make life easier. Home Depot HUSKY®, Sears CRAFTSMAN®, and Snap-On® tools are all guaranteed for life and we’ve found them to be more reliable over discount tools.

Storage shelves for kit and running gear parts

Body storage area (can be outside)

SAE and metric socket set, a 52-piece set that includes an 18mm is a good choice

Deep sockets for some common sizes are helpful.

SAE Combination wrench set ($\frac{3}{8}$ ” – $\frac{15}{16}$ ”)